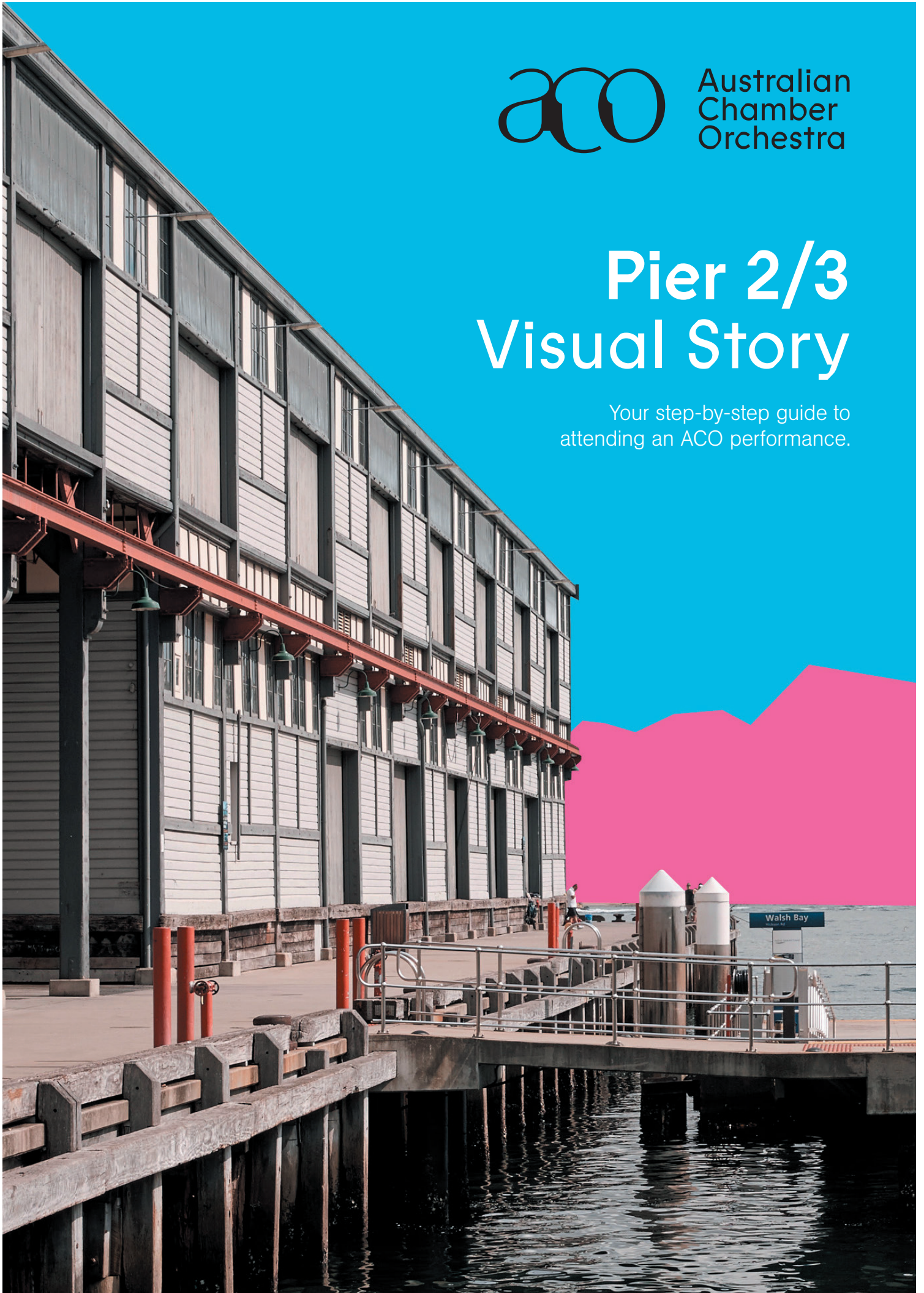




Australian
Chamber
Orchestra

Pier 2/3 Visual Story

Your step-by-step guide to
attending an ACO performance.



THE AMERICAN: RELAXED PERFORMANCE

Schedule

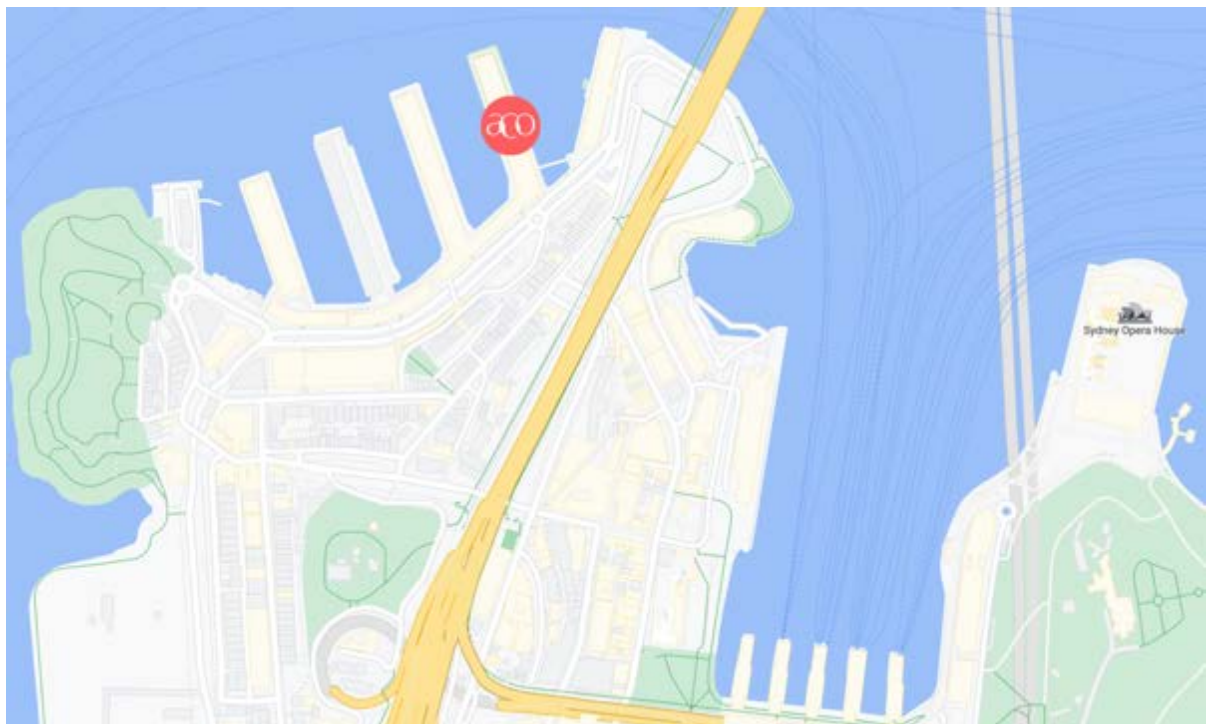
To help you plan your visit, here are the performances timings.

- 12pm** The foyer will be open and you can buy a drink or a snack at the bar if you would like to.
- 12.45pm** The theatre will open and you can find your seats.
- 1pm** The performance begins.
- 1.50pm** The performance will finish and you can make your way back to the foyer and then head home.

The ACO staff are there to help with any questions. You can contact us by phone on 1800 444 444 or email boxoffice.c@aco.com.au.

How to get to the ACO

The ACO is located at Pier 2/3, Suite 3, 13A Hickson Rd, Dawes Point.



You can find out more about visiting ACO on the website's '[Plan your Visit](#)' page and the '[Accessibility](#)' page.

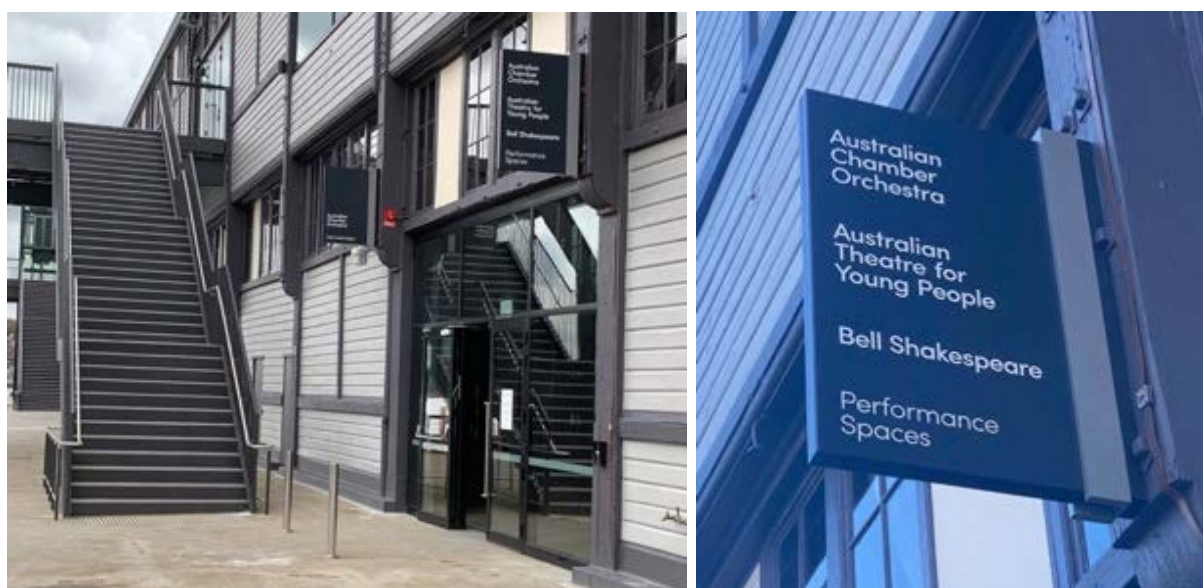
Arriving at the ACO

The ACO is located at the far end of Pier 2/3. You can enter the Pier from either side.

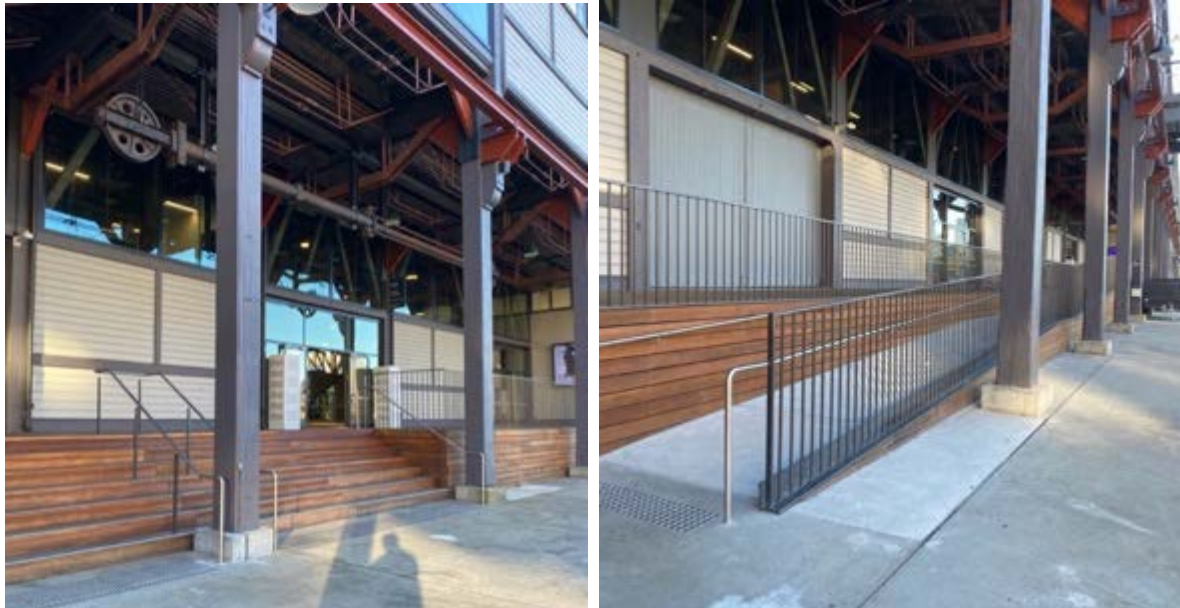
A) The Western side of the Pier has a sign saying 'Pier 2/3'



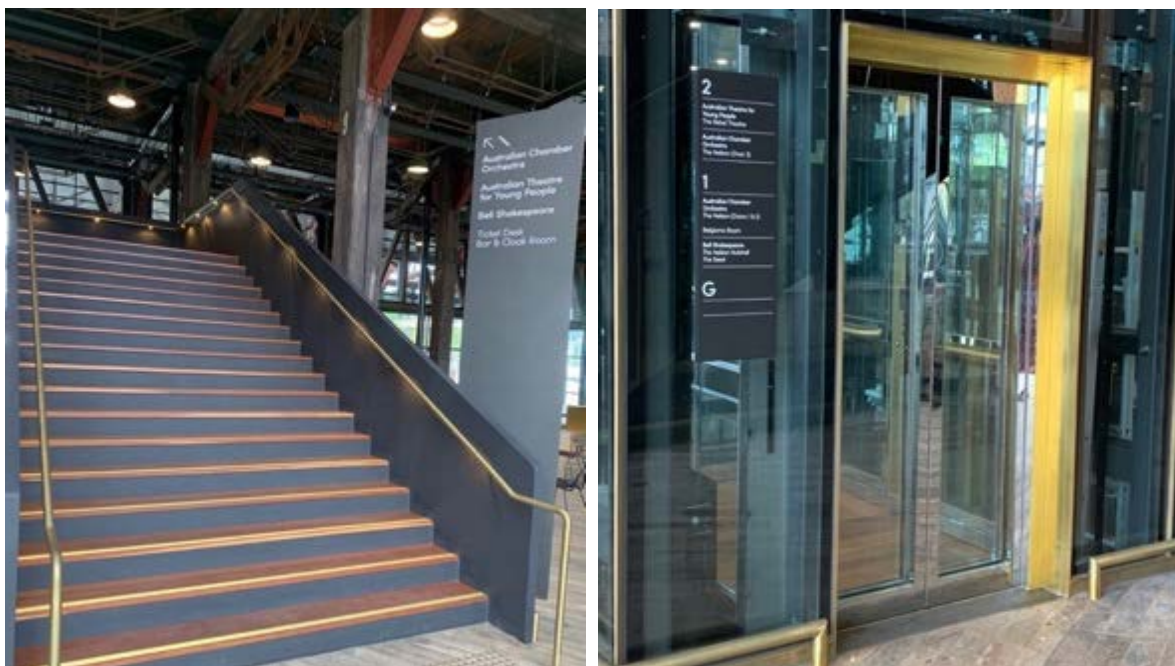
You can walk through this entrance and walk along the ground level, past Bell Shakespeare Company, until you see a sign saying the 'Australian Chamber Orchestra'.



B) You can also enter from the Eastern side, where you will walk past the Australian Theatre for Young People and up the ramp or stairs.

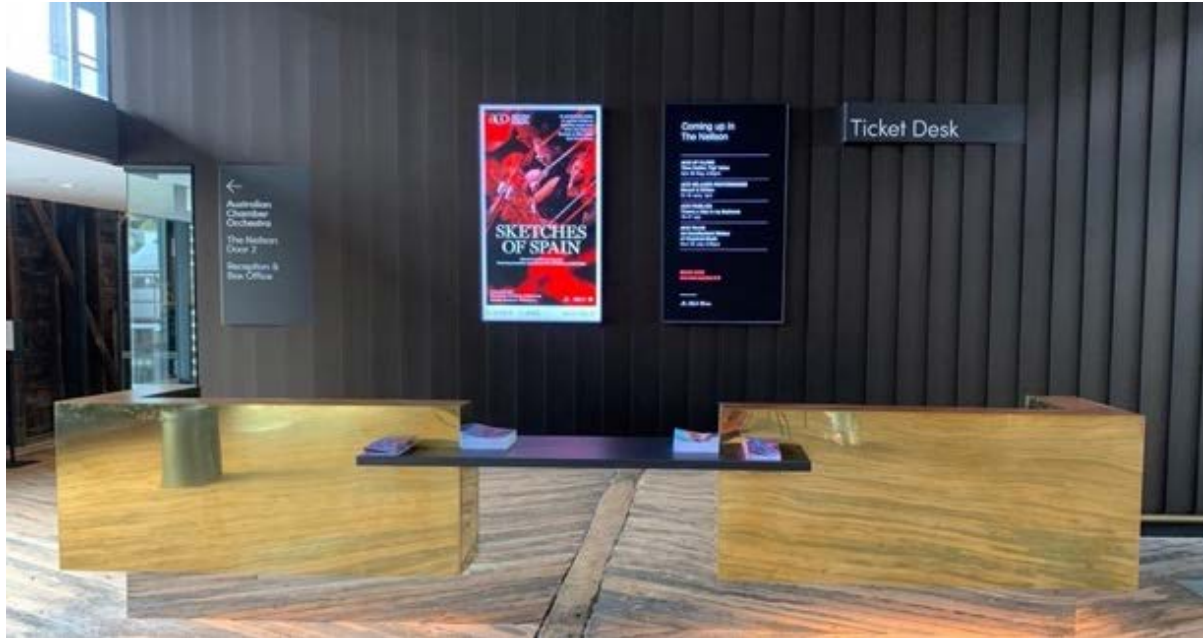


You can enter the building through the big glass doors on either side of the Pier and you will be in the **ground floor foyer**. You can then either take the stairs or the bronze lifts up to **Level One** where you will find the **ACO Foyer**.



Inside Pier 2/3

Once you are on Level One, you can pick up your ticket from the Ticket Desk (or access the email ticket on your phone).



Before the performance, you can purchase drinks or snacks at the bar in the foyer.



You can find Accessible Toilets on all levels of this building.



If you need assistance with finding your way or anything else, you can ask an ACO Usher for help. They will be wearing black t-shirts and an ACO badge.

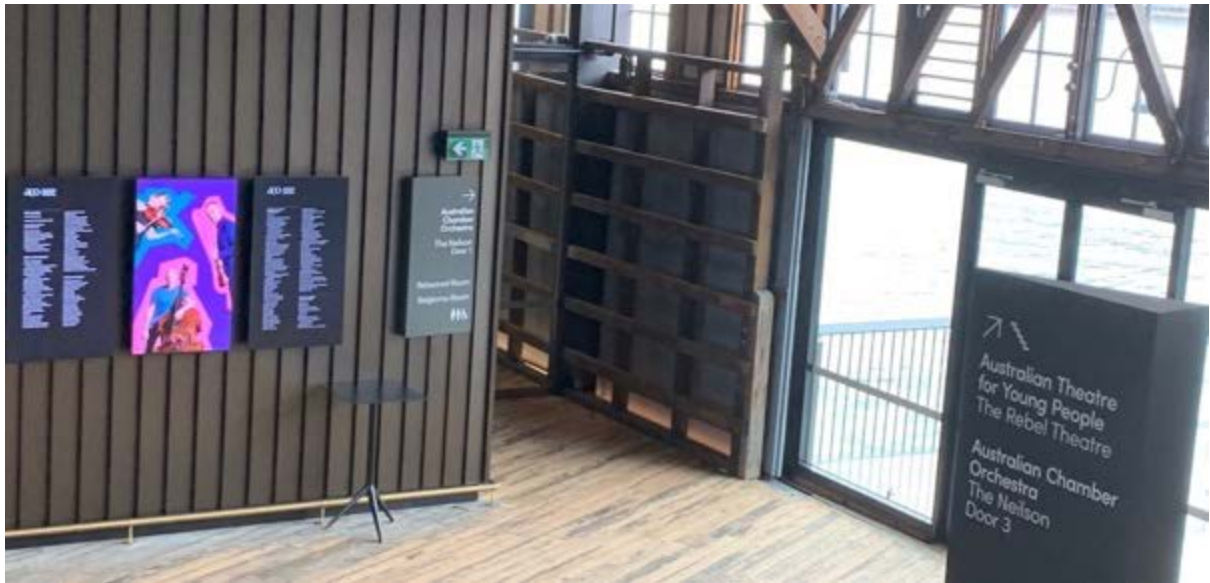


Entering the performance space

The performance will be in the ACO's theatre called **The Neilson**.

You will enter The Neilson via **Door 1** on the Eastern (right) side of the building. An ACO Usher will show you the way.

Door 1



An ACO Usher will check your ticket as you enter The Neilson.

When you enter the performance space, you will be able to choose where you would like to sit. There will be fixed seats or the option to sit on the floor.



The performance

The performance will start at 1pm. The house lights will stay on the whole time.

A host from the ACO will welcome everyone to the concert and explain how the concert will run. The orchestra musicians will enter the stage to perform.



The musicians will be playing a few different pieces of music. In between the pieces, one of the musicians will talk to the audience about the music.

You are free to make noise and can clap whenever you would like to.

If you would like to move around during the performance you are welcome to do so. If you would like to leave the performance you can exit through any of the doors. You are welcome to come back into The Neilson at any time. An usher will help you.

The performance be approximately 50-minutes long and then the musicians will take a bow and leave the stage.

The ushers will then help you and all audience members leave the performance space.

The Quiet Space

If you need a break from the performance at any time, you can leave The Neilson and go to the 'quiet space'. To leave the theatre you will need to go up the stairs and exit from the top door.

An usher will help you find your way out of the theatre and downstairs to the quiet space.



The Quiet Space will have chairs, rugs and cushions and a screen showing the performance.