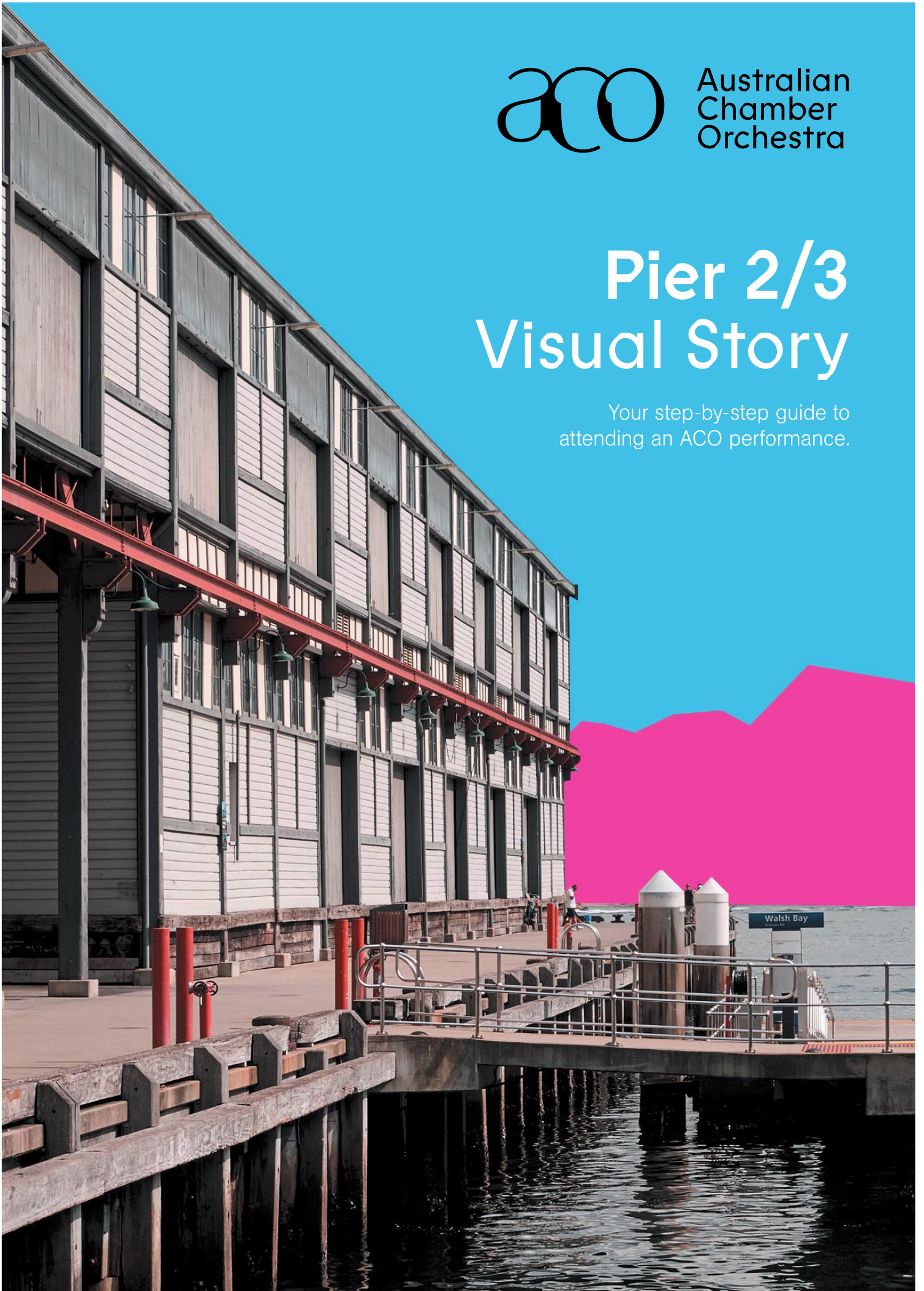




Australian
Chamber
Orchestra

Pier 2/3 Visual Story

Your step-by-step guide to
attending an ACO performance.



Schedule

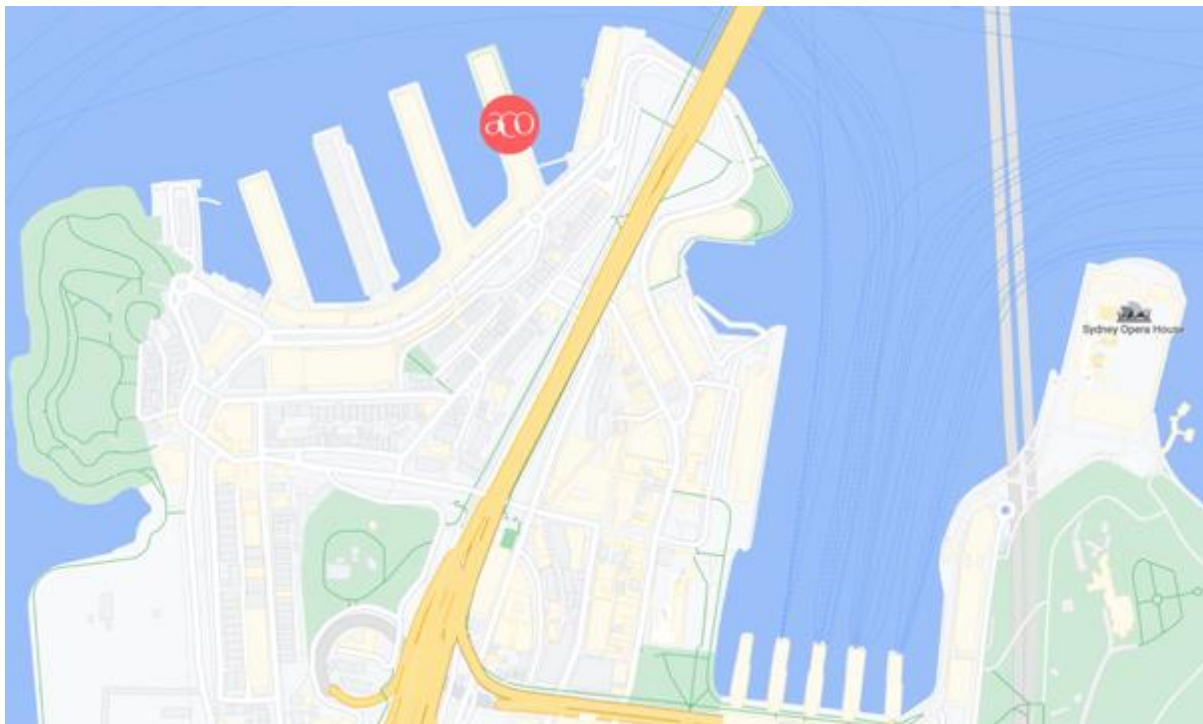
To help you plan your visit, here are the performances timings.

- 10:30am** The foyer will be open and you can buy a drink or a snack at the bar if you would like to.
- 11.15am** The theatre will open and you can find your seats.
- 11:30am** The performance begins.
- 12.15pm** The performance will finish and you can make your way back to the foyer and then head home.

The ACO staff are there to help with any questions. You can contact us by phone on 1800 444 444 or email boxoffice@aco.com.au.

How to get to the ACO

The ACO is located at Pier 2/3, Suite 3, 13A Hickson Rd, Dawes Point.



You can find out more about visiting ACO on the website's ['Plan your Visit'](#) page and the ['Accessibility' page](#).

Arriving at the ACO

The ACO is located at the far end of Pier 2/3. You can enter the Pier from either side.

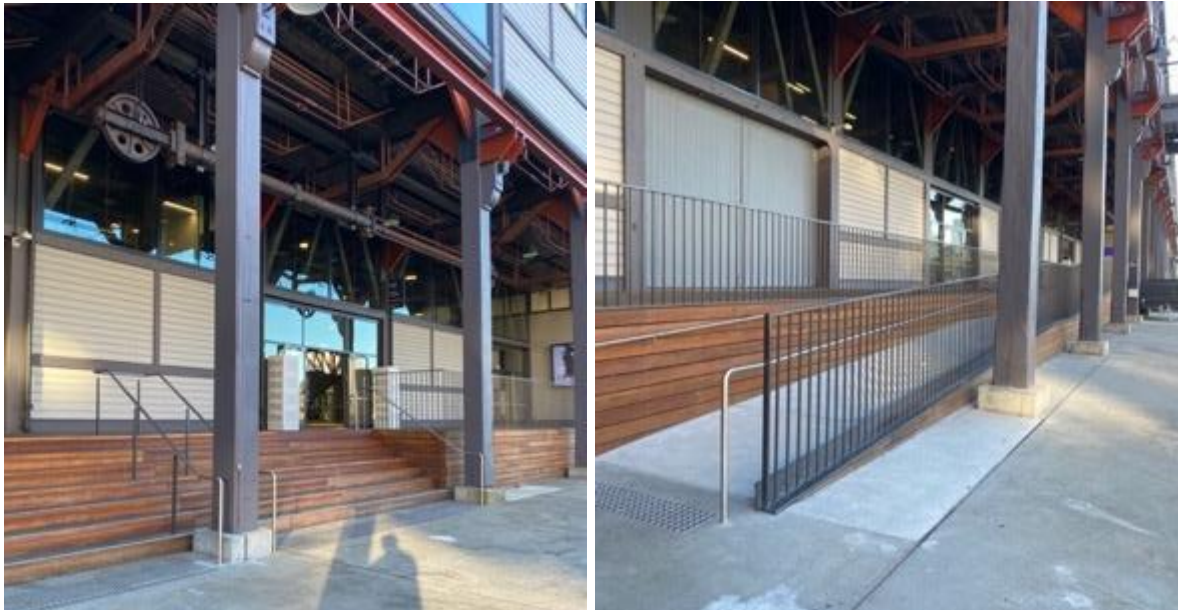
A) The Western side of the Pier has a sign saying 'Pier 2/3'



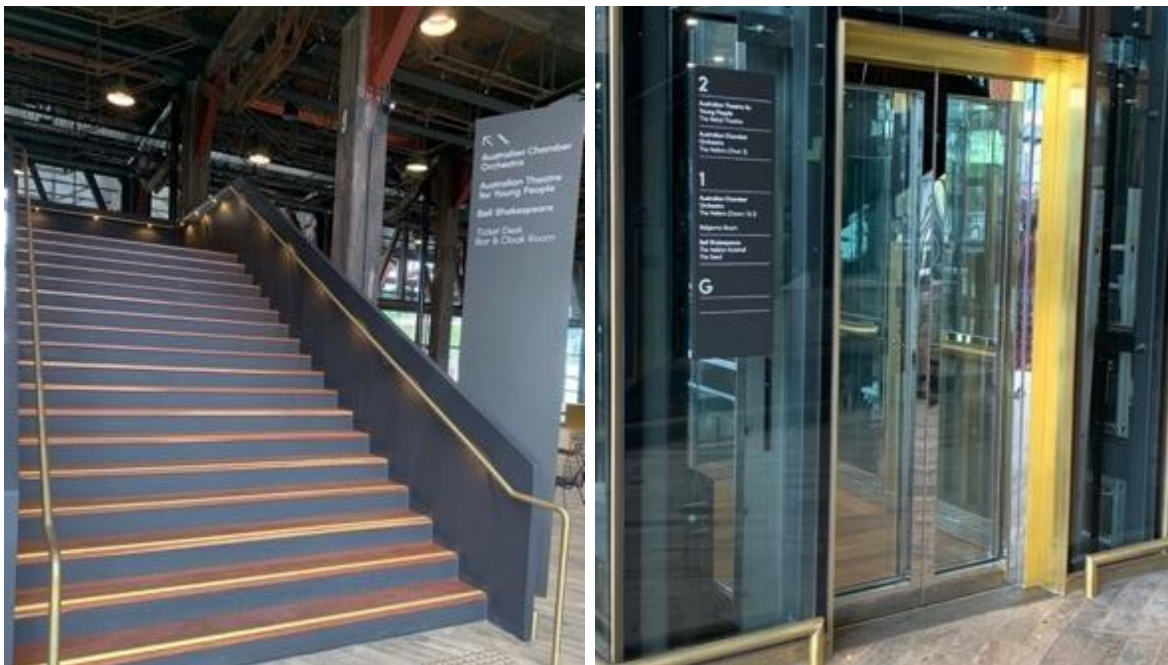
You can walk through this entrance and walk along the ground level, past Bell Shakespeare Company, until you see a sign saying the 'Australian Chamber Orchestra'.



B) You can also enter from the Eastern side, where you will walk past the Australian Theatre for Young People and up the ramp or stairs.

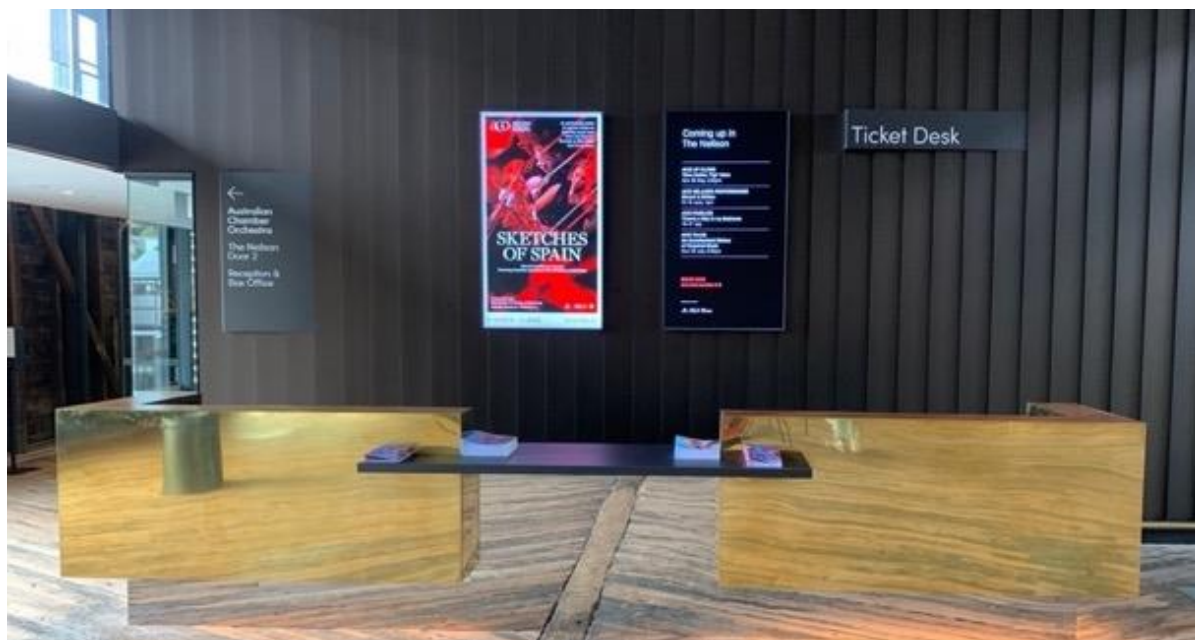


You can enter the building through the big glass doors on either side of the Pier and you will be in the **ground floor foyer**. You can then either take the stairs or the bronze lifts up to **Level One** where you will find the **ACO Foyer**.



Inside Pier 2/3

Once you are on Level One, you can pick up your ticket from the **Ticket Desk** (or access the email ticket on your phone).



Before the performance, you can purchase drinks or snacks at the bar in the foyer.



You can find Accessible Toilets on all levels of this building.



If you need assistance with finding your way or anything else, you can ask an Usher for help. They will be wearing black t-shirts and an ACO badge.

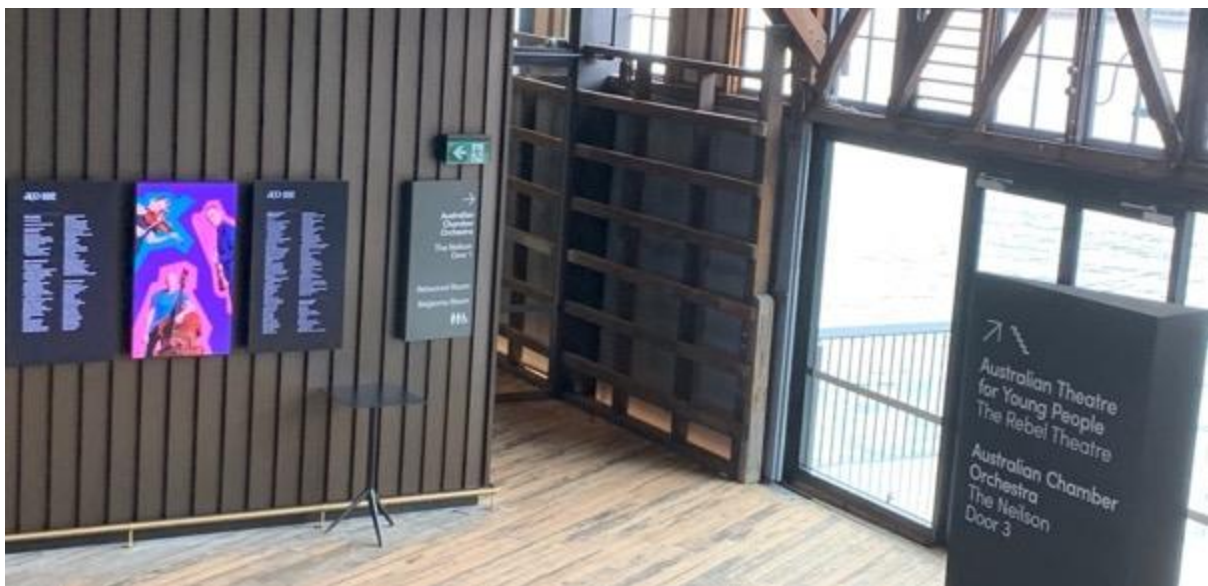


Entering the performance space

The performance will be in the ACO's theatre called **The Neilson**.

You will enter The Neilson via **Door 1** on the Eastern (right) side or **Door 2** on the Western (left) side. An Usher will show you the way.

Door 1



Door 2



There may be a short queue to enter the performance space. An Usher will check your ticket as you enter.

When you enter the performance space, you will be able to choose where you would like to sit. There will be fixed seats or the option to sit on the floor if you would like.



The Quiet Space

If you need a break from the performance at any time, you can leave The Neilson and go to the 'quiet space', down the corridor from Door 1. An Usher will help you find your way.



The Quiet Space will have chairs, rugs and cushions and a screen showing the performance.

The performance



When you enter the theatre, you will see a theatre set, which looks like the inside of a living room in a house. There are music stands, and a musical instrument called a Celesta on it. In front of this, there is a large Christmas tree, with colourful presents underneath and a dance stage. In this performance, there will be 5 musicians, two dancers and an actor.

The performance will start at 11:30am. You will hear a pre-recorded acknowledgement of Country, and then the performers will enter the stage. This signals the beginning of the performance.

You are free to make noise and can clap whenever you would like to.

If you would like to leave the theatre, an usher will assist you to find the Quiet Space.

The performance runs for approximately 30 mins. The performers will bow and exit the stage.

The Ushers will then help you and all audience members leave the performance space.

